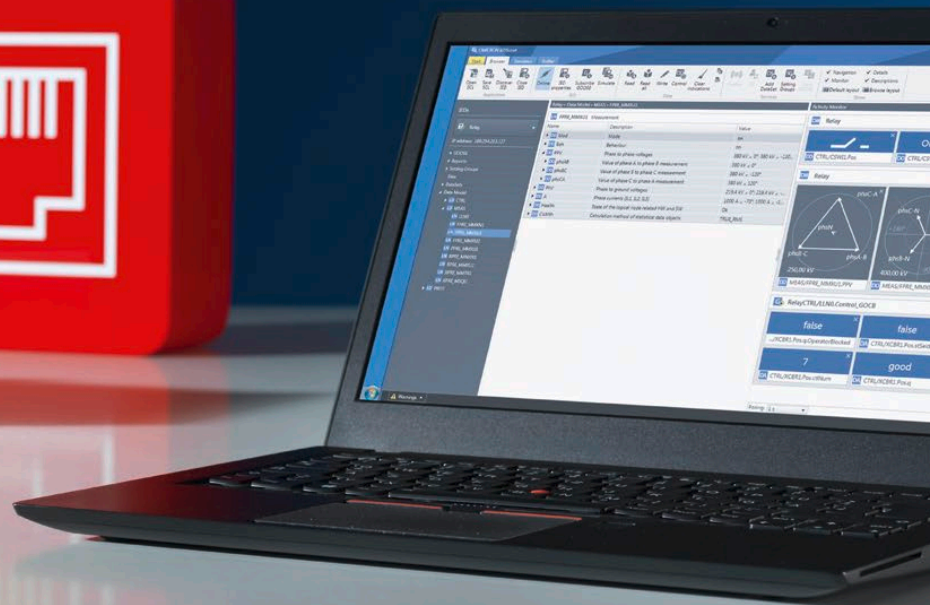


IEDScout

Versatile Software Tool for Working with IEC 61850 Devices



One software tool for working with all IEC 61850 IEDs

Examine IEC 61850 devices

IEDScout is an ideal tool for protection and substation automation engineers working with IEC 61850 devices.

It provides access to the Intelligent Electronic Devices (IEDs) and performs numerous useful functions when working with them. A new user interface assists to find all relevant information of the IEDs.

Unveil the inside view of any IEC 61850 IED

IEDScout allows the engineer to look inside the IED and at its communication. All data modeled and exchanged becomes visible and accessible.

Additionally, IEDScout serves numerous useful tasks, which could otherwise only be performed with dedicated engineering tools or even a functioning master station.

IEDScout shows an overview representing the typical workflow of commissioning, but also provides detailed information upon request.

Simulating IEDs

Whole IEDs, including their server, Reports, and GOOSE can be simulated based on their SCL file. The data values can be changed. Test mode and Simulation indications are supported and can be set.

Browse and discover the IED's data model

The IED's IP-address is typically the only information needed to connect to an IEC 61850 device.

Once the connection to the IED is established, IEDScout reads the self-description of the IED to obtain the structure of the data model.

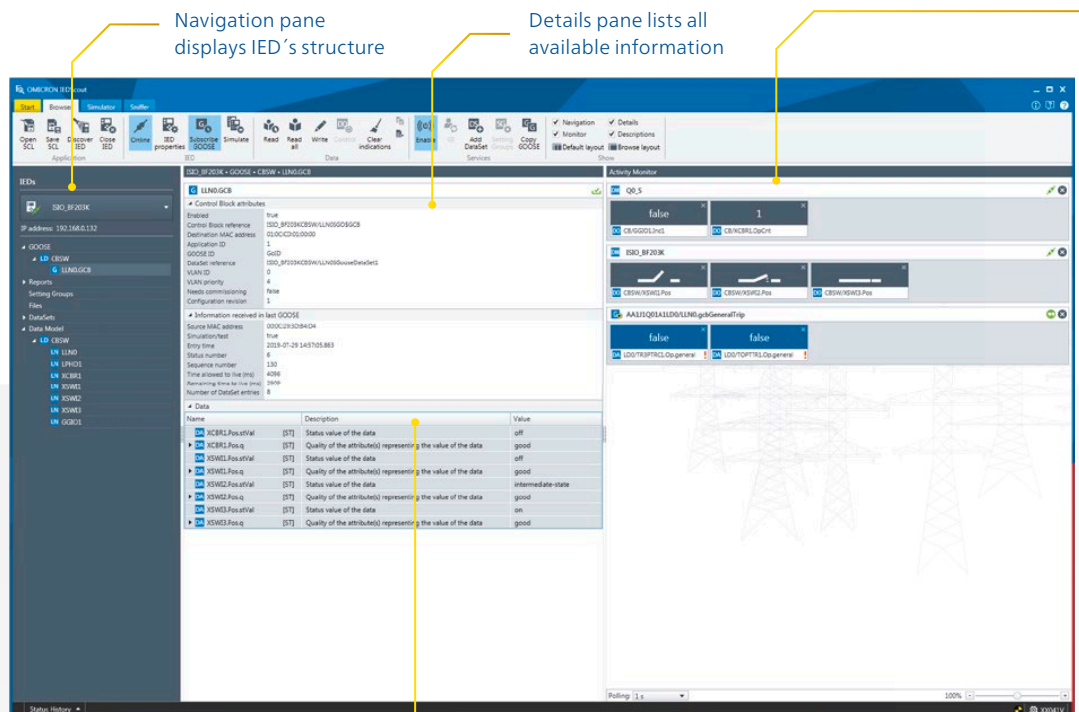
The actual values contained in the data model are read and displayed in data view, showing all GOOSE, transmitted values and Reports at glance.

Activity Monitor

Users can drag and drop information in which they are interested into the new Activity Monitor. This combines Reports, GOOSE, DataSets and any other data of the IED's Data Model. The values are polled automatically.

Work with SCL files

IEDScout comes with an intelligent and powerful SCL parser to check the quality of the engineering files according to IEC 61850-6.



Navigation pane displays IED's structure

Details pane lists all available information

Optionally show descriptions as used in the standards

Show descriptions

If explanations of an attribute are needed, the descriptions as defined in the standard can be displayed. Also further viewing options are now available.

Navigation Details
 Monitor Descriptions
 Default layout Browse layout
Show

Show explanations as defined in the standard

Name	Description
DA XCBR1.Pos.stVal [ST]	Status value of the data

The screenshot shows a zoomed-in view of the Activity Monitor. It displays several data points in a grid-like layout. The top row shows 'false' and '1'. The middle row shows three data points with graphical indicators: 'CB/XCBR1.Pos', 'CB/XCBR2.Pos', and 'CB/XCBR3.Pos'. The bottom row shows 'false' and 'false' with warning icons. The interface includes window titles like 'DM Q0_S', 'DM ISIO_AE004J', and 'AA1J1Q01A1LD0/LLN0.gcbGeneralTrip'.

Activity Monitor combined with simulated IED in zoomed view for better visibility during commissioning.

One software tool for your applications

1 Testing and troubleshooting

Substation engineers can use this tool for testing and troubleshooting, e.g., for assessing the status of an IED, manipulating data, or obtaining the information required to configure testing with GOOSE messages.

2 Commissioning

During commissioning, IEDScout provides client functionality without requiring a functioning master station. It checks the availability and proper operation of the installed IEDs. Control sequences can be sent to the IEDs and their responses (e.g., unsolicited Reports) can be received and verified.

The new Activity Monitor visualizes information in the size needed.

The Simulator allows testing missing IEDs and communication to the SCADA system.

3 IED development

IED developers can use this tool to verify the structure and the functionality of the devices under development. IEDScout is an extremely valuable tool for generating the mandatory IED configuration files from prototype implementations. This provides the necessary configuration data for integrating devices into systems without the need for custom SCL tools.

Your benefits

- > Works with IEC 61850 compatible IEDs from any vendor
- > Investigates multiple IEDs simultaneously
- > Analyzes SCL files
- > Investigates data traffic in-depth – even between other clients and servers
- > Simulates IEDs

Advanced possibilities

Saving SCL files

The data model obtained during the discovery process and additional information accessible from the context can be saved in SCL format. For testing, this provides a convenient link to import GOOSE data into testing tools. For IED development, this provides files for the engineering process, even without the availability of SCL tools for the IED. The SCL-scheme to be used can be chosen, including the file type (IID, ICD).

Fast connection using SCL files

By using an existing SCL file for a specific device, the workflow is essentially accelerated, since the time consuming discovery process is not required and only the actual values have to be read from the IED.

Writing data and control structures

Writable data can be modified by writing to the data attributes. Even complex control sequences, such as select-before-operate, can be issued.

Services such as GOOSE and Report can be controlled by modifying the data in the corresponding control blocks.

Sniffing values

IEDScout allows to visualize any traffic on your substation network easily. This is possible for GOOSE, Reports and Client/Server (C/S) communication.

Sniffer tab to analyze data traffic

Filters for IED or dedicated traffic

The screenshot displays the OMICRON IEDScout Sniffer interface. The top menu bar includes Start, Browser, Simulator, and Sniffer. The toolbar contains various icons for Start, Pause, Stop, Clear, Auto scroll, Set time, Dump & analyze, Subscribe GOOSE, Import, Export, Copy, IED, GOOSE, Retrans, Report, C/S, and Protocol error. The main window is divided into a Messages table and a Details pane.

Time	Relative time	Source	Destination	Description
11:24:36.481495	11.902758	192.168.0.187:27413	192.168.0.65:102	GetDataValues of ISIO_AE004/CB/GGIO1.SPCSO1.stVal
11:24:36.755787	12.177050	192.168.0.187:27413	192.168.0.65:102	SelectWithValue of ISIO_AE004/CB/GGIO1.SPCSO1.SBOW
11:24:37.508973	12.930236	192.168.0.187:27413	192.168.0.65:102	GetDataValues of ISIO_AE004/CB/GGIO1.SPCSO1.stVal
11:24:38.439607	13.860870	192.168.0.187:27413	192.168.0.65:102	Operate of ISIO_AE004/CB/GGIO1.SPCSO1.Oper
11:24:38.482139	13.903402	192.168.0.65:102	192.168.0.187:27413	CommandTermination
11:24:38.529004	13.950267	192.168.0.187:27413	192.168.0.65:102	GetDataValues of ISIO_AE004/CB/GGIO1.SPCSO1.stVal

The Details pane shows the following information for the selected message:

Operate of ISIO_AE004/CB/GGIO1.SPCSO1.Oper

Details

- ACSI model class: CONTROL
- ACSI model service: Operate
- Destination IP address: 192.168.0.65
- Destination port: 102
- Source IP address: 192.168.0.187
- Source port: 27413
- Time: 2019-08-02 11:24:38.385
- Duration: 0.054130 s

Request

- Success: true
- Timestamp: 2019-08-02 11:24:38.385
- Path: ISIO_AE004/CB/GGIO1.SPCSO1.Oper [CO]
- Sequence: 6 items
 - Boolean: true
 - Integer: 2
 - OctetString: x'13D5C007'
 - UnsignedInteger: 0
 - UtcTime: 2019-08-02 11:24:38.384
 - Boolean: false
 - BitString: 11

Response

- Success: true
- Timestamp: 2019-08-02 11:24:38.439
- WriteResults: Success

Visualizing any traffic

Detailed investigation

Analyzing Client/Server traffic on ACSI level

IEDScout provides functionality to analyze Client/Server communication. In a substation, the C/S communication is mainly used for SCADA. The client is typically the station controller and the server is typically an IED, such as a protection relay.

In the context of IEC 61850, the term "MMS" is often used when C/S is actually meant. The function captures not only the messages related to the C/S traffic, but also the GOOSE messages, so these two ACSI services are covered together in one list of events.

The C/S communication between station controllers and IEDs typically consists of sequences of requests and responses. IEDScout analyzes the messages, and groups requests and responses that belong together.

Exporting the details

To investigate the traffic in more detail, exporting the lower protocol layers (MMS and Ethernet) is possible. To analyze the transactions, the PCAP is used.

For inspection on the byte level in an external protocol analysis software, the Ethernet packets belonging to a selected scope can be exported to PCAP files.

Filters limit the traffic to relevant parts and search functions help to find specific messages.

Receiving Reports

IEDScout can obtain Reports just as any other client, e.g. the master station. Reports are enabled by enabling the corresponding Report control block and visualized in the Activity Monitor by drag and drop. Properties and trigger options can be defined.

Subscribing to GOOSE

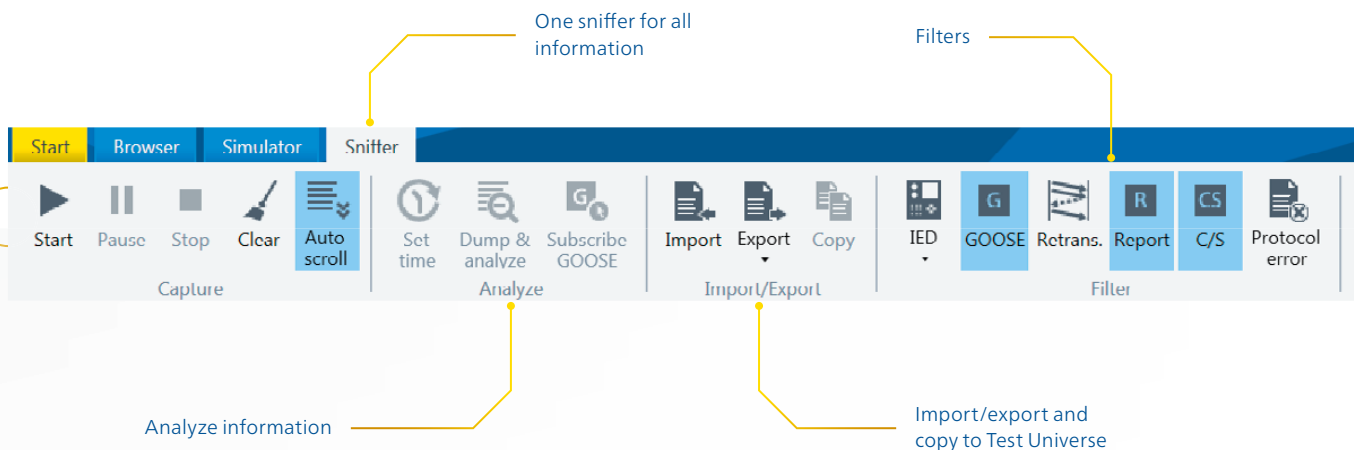
GOOSE published from IEDs can be subscribed. These subscribed GOOSE are permanently monitored and displayed in the activity window with their actual values.

GOOSE sniffing

IEDScout scans the network for any GOOSE and presents them for subscription. Detected GOOSE information can be transferred to the GOOSE Configuration Module for the CMC test set.

Supported standards

- > IEC 61850 Ed. 1
- > IEC 61850 Ed. 2
- > IEC 61850-7-410:2013
- > IEC 61850-7-420:2009
- > IEC 61400-25 1...6:2006...2010



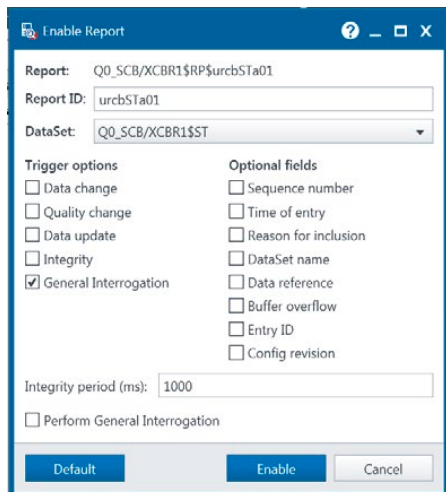
Activity Monitor

Dragging any information to the Activity Monitor starts polling, subscribing to GOOSE or enabling a Report.



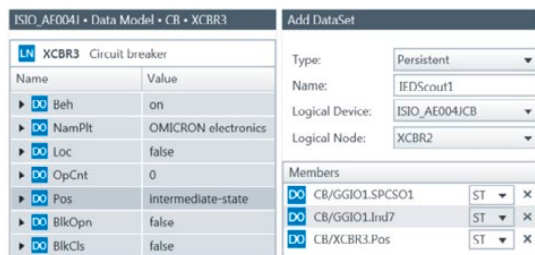
Enabling Reports

Trigger options and optional fields can be defined just by enabling them.



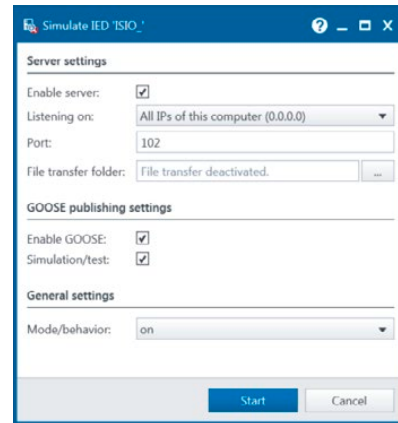
Creating DataSets

Datasets can be created easily – just drag and drop the desired information.



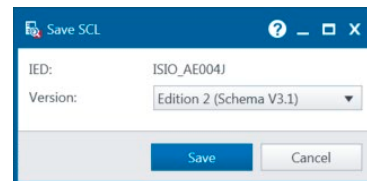
Simulating IEDs

Any IED defined in an SCL file can be simulated. The simulated server supports GOOSE, Reports (buffered and unbuffered), and Select Before Operate. The simulated IED can send GOOSE with Test/Simulation indication and switching between different Modes/Behaviors is possible.



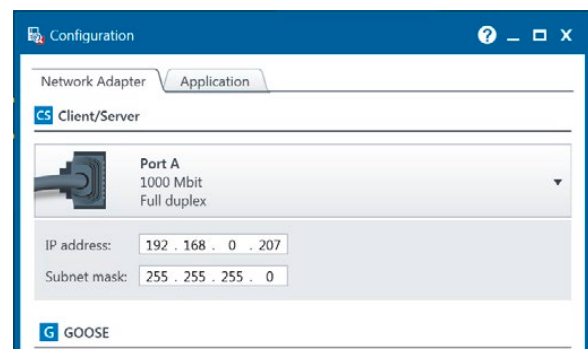
Saving SCL

Save the data model and services of any server, choosing the edition to be used.



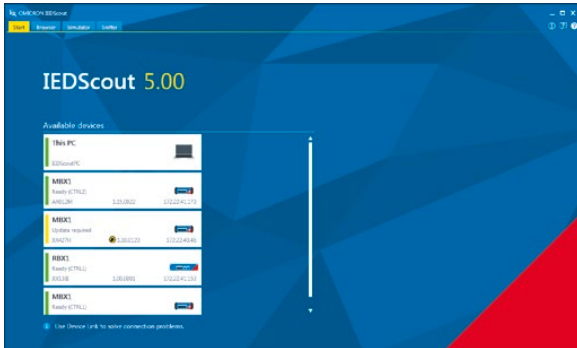
Connecting to network

The network card is visualized with plugged in cables. For sniffing an additional adapter can be used.



Additional features

- > List of recently used IEDs and files
- > User interface in English and German
- > Hyperlink navigation
- > Connecting to devices
- > Testing devices used can be chosen



Software licenses

IEDScout PC – Single license

IEDScout on platform (RBX)

IEDScout on platform (MBX)

IEDScout for MBX1 / RBX1

With IEDScout version 5 and later, IEDScout can be operated on Windows PC or on the cybersecure test sets MBX1 or RBX1. For the test set there are two options available: The mobile MBX1 test set, or the rack-mountable RBX1 platform for permanent installation in substations.

Benefits of using IEDScout for MBX1 / RBX1

- > Extremely cybersecure and powerful platform
- > Isolation of Windows PC from substation network
- > License on the test set makes sharing in teams easy
- > Simulation of dozens of IEDs with their real IP addresses possible

FREE TRIAL VERSION

Try out the software 30 days for free.
Visit our website for details:

www.omicronenergy.com/iedscout



We create customer value through ...

Quality

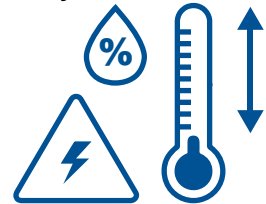
We always want you to be able to rely on our testing solutions. This is why our products have been developed with experience, passion and care and are continually setting ground-breaking standards in our industry sector.



You can rely on the highest safety and security standards

Superior reliability with up to

72



hours burn-in tests before delivery

100%

routine testing for all test set components



ISO 9001
TÜV & EMAS
ISO 14001
OHSAS 18001

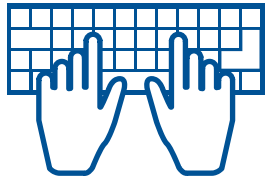


Compliance with international standards

Innovation

Thinking and acting innovatively is something that's deeply rooted in our genes. Our comprehensive product care concept also guarantees that your investment will pay off in the long run – e.g. with free software updates.

More than

200 


developers keep our solutions up-to-date

 I need...



... a product portfolio tailored to my needs

Save up to

70% 

testing time through templates, and automation

More than

15% 

of our annual sales is reinvested in research and development

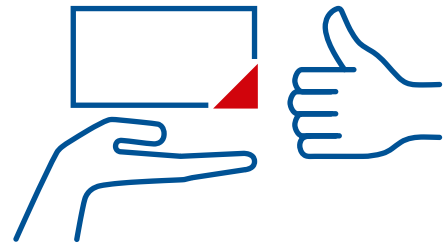
We create customer value through ...

Support

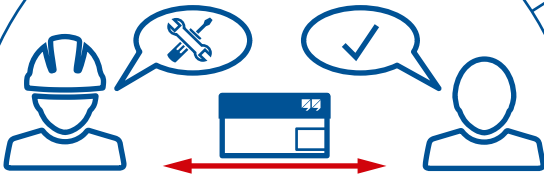
When rapid assistance is required, we're always right at your side. Our highly-qualified technicians are always reachable. Furthermore, we help you minimize downtimes by lending you testing equipment from one of our service centers.



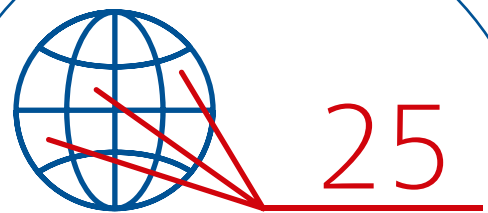
Professional technical support
at any time



Loaner devices help to
reduce downtime



Cost-effective and straight-
forward repair and calibration



offices worldwide for local
contact and support

Knowledge

We maintain a continuous dialogue with users and experts. Customers can benefit from our expertise with free access to application notes and professional articles. Additionally, the OMICRON Academy offers a wide spectrum of training courses and webinars.



Frequently OMICRON hosted user meetings, seminars and conferences

More than

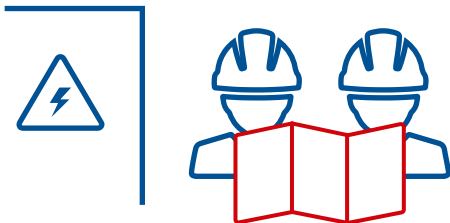
300



Academy and numerous hands-on trainings per year



to thousands of technical papers and application notes



Extensive expertise in consulting, testing and diagnostics

OMICRON is an international company that works passionately on ideas for making electric power systems safe and reliable. Our pioneering solutions are designed to meet our industry's current and future challenges. We always go the extra mile to empower our customers: we react to their needs, provide extraordinary local support, and share our expertise.

Within the OMICRON group, we research and develop innovative technologies for all fields in electric power systems. When it comes to electrical testing for medium- and high-voltage equipment, protection testing, digital substation testing solutions, and cybersecurity solutions, customers all over the world trust in the accuracy, speed, and quality of our user-friendly solutions.

Founded in 1984, OMICRON draws on their decades of profound expertise in the field of electric power engineering. A dedicated team of more than 900 employees provides solutions with 24/7 support at 25 locations worldwide and serves customers in more than 160 countries.

For more information, additional literature, and detailed contact information of our worldwide offices please visit our website.

